

SPORTSCOACH



CoachmenRV.com

# THE COACHMEN ADVANTAGE

What is the Coachmen advantage? It's the collection of unique features offered in a Coachmen motorhome to ensure a smoother ride, a better camping experience, and a motorhome that will last for years.

## 1. NOBLE SELECT™

Protected by a three-year warranty, these sidewalls have a high-gloss gelcoat finish to prevent fading. They are also 20% lighter than wood substrate sidewalls, provide more occupant cargo carrying capacity, and offer three times the insulation against extreme climates.

## 2. AZDEL™ COMPOSITE

Most manufacturers use wood sidewalls that can expand, swell, and eventually mold. We use Azdel. It's impervious to water, won't rot or mold, and, with less than a 1% chance of delaminating, it ensures the long-term integrity of the sidewalls.

## 3. REINFORCED LAMINATION

We vacuum bond and pinch roll every sidewall, floor, and roof, then perform a pull adhesion test. Most manufacturers just do one process or the other, but by doing both we improve the strength and longevity of the sidewalls.

## 4. FOREFRONT OF TECHNOLOGY

We offer the latest in technology by pairing electronics with smart phones. A safer and larger viewing area is achieved when dual-mirroring your smart phone GPS to the 10" Axxera dash radio and backup system. Play your favorite songs from your favorite apps through our 4-channel 5000 watt bluetooth amplifier. Wi Fi Ranger will help keep you connected in more remote areas.

## 5. SIGHT RITE DASH™

Our dashes are angled 20 degrees forward. This increases the line of sight for the driver, and offers the best road visibility on the market.

## 6. EVEN COOL DUCT™

Our patented duct system evenly disperses air through the whole coach. And we use Amaco ducting instead of Styrofoam because it's antimicrobial, preventing the growth of bacteria and ensuring a cool, clean coach in even scorching heat.

## 7. DIGITAL OWNER'S MANUAL

Our owner's manuals are easy to access through the Coachmen website or our free app. Supplemented with videos, PowerPoints, and more, it's got all you need to know about your coach.

## EXTERIOR COLOR OPTIONS



Full Body Paint – Cambridge



Full Body Paint – Syrah

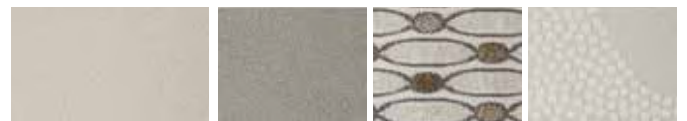


Full Body Paint – Garnet



Full Body Paint – Desert Sand

## INTERIOR DÉCOR COLOR SELECTIONS



Coast



Cascade



Sierra

## INTERIOR WOOD COLOR SELECTIONS



Sumatra

Beachwood

Slate

# A LUXURY COACH, INSIDE AND OUT.



WHEN NOT TAKING IN BREATHTAKING VIEWS FROM THE GREAT OUTDOORS, FEAST YOUR EYES ON THE REMARKABLE INTERIOR VIEWS OF THE SPORTSCOACH – THE MOST AFFORDABLE DIESEL ON THE MARKET.



Whether you're preparing a meal or watching your favorite sporting event, Sportscoach has it all. From its tastefully appointed kitchen to the exterior LED TV, you'll want to show it off. Each floorplan is beautifully outfitted with tile flooring throughout. New cockpit dash console includes LED lighting around cupholders and gauges for easier nighttime navigation.



With a 360HP ISB Cummins rear diesel engine and a 6-speed Allison 3,000 MH automatic transmission, Sportscoach gets 800 lbs./ft. of torque and has a 10,000 pound towing capacity.

Sportscoach comes fully-equipped with an outdoor entertainment system, including an exterior LED TV.

Storage is plentiful in Sportscoach, including a pass-through full basement that's ideal for stowing oversized gear without compromising living space.

The generator is mounted on a slide system for ease of maintenance.





Photography features the Sportscoach 403QS floorplan.



The master bathroom in the Sportscoach 403QS features a double vanity with plenty of countertop space. The 402TS floorplan is one of few motorhomes to include two full bathrooms, both with stainless steel and porcelain touches making them easy to clean.

Every Sportscoach is prepped and ready for a washer and dryer so you'll always have fresh laundry.

In the bedroom you'll find a king mattress with an elegant designer headboard, spacious wardrobe and an LED TV.

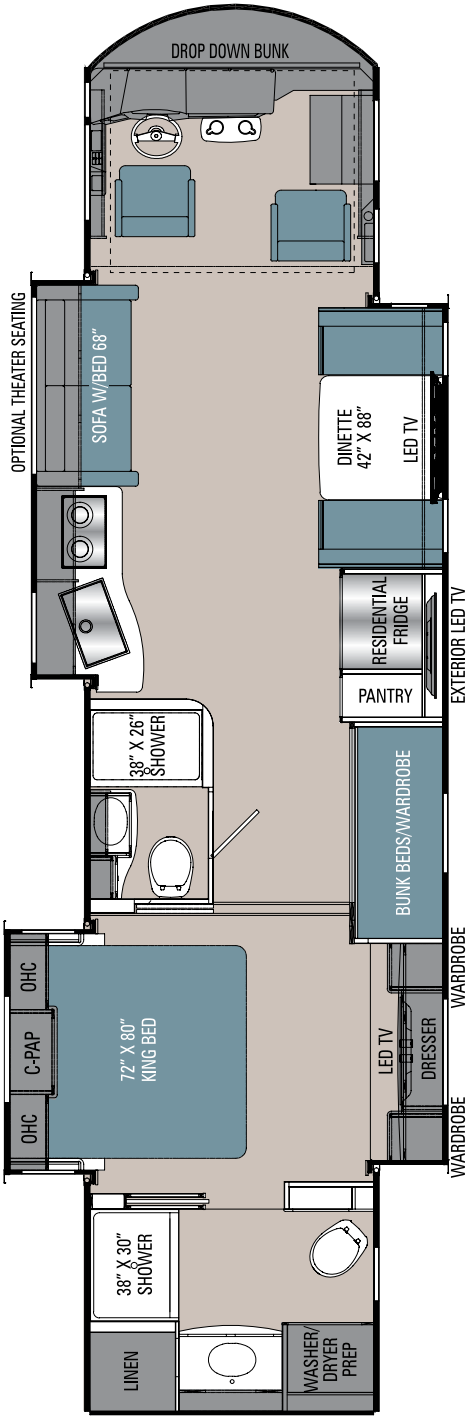
The Coach-Pap™ Station allows for storage of CPAP machines and other electronics, located in the cabinet above the bed.

There's even room for the kids to sleep over with the drop-down cabover bunk.

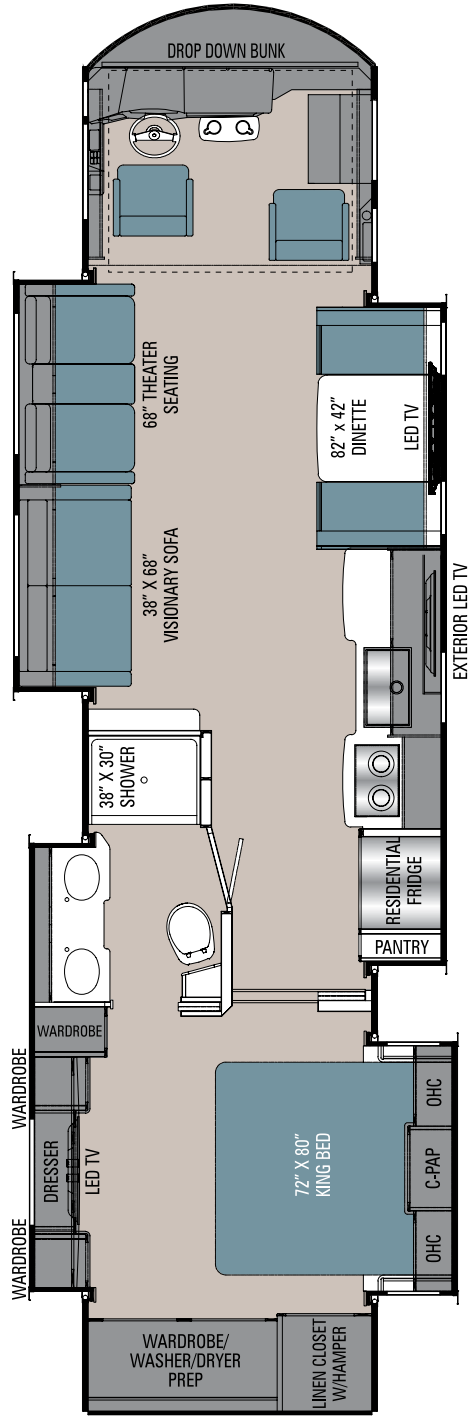
Sportscoach's 403QS floorplan features plenty of seating to recline and relax after a long, adventurous day.

Sportscoach RR includes two floorplan options, so you'll have no trouble choosing the one that suits you perfectly.

# FLOORPLANS



402TS



403QS

## STANDARD FEATURES

### INTERIOR APPOINTMENTS

Padded Vinyl Ceiling  
Flat Panel Hardwood Cabinet Doors Throughout  
Self Closing Ball Bearing Drawer Guides Throughout  
Solid Surface Countertop in Galley  
Brushed Nickel Hardware and Fixtures  
Manual Side Shades in Driver-Passenger Area  
6-Way Power Driver Seat with 3-Point Seat Belt  
6-Way Power Passenger Seat with 3-Point Seat Belt and Manual Footrest  
Solar and Privacy Shades Throughout  
Theater Seating (403QS)  
Electric Step Cover  
Visionary Sofa Hide-A-Bed  
Dream Dinette  
Storage Drawers Under Booth Dinette  
Power Front Solar and Privacy Shade  
Upgraded Porcelain Tile Throughout  
Fireplace( 403QS Only)

### INTERIOR EQUIPMENT

50" LED TV Coach  
Wi Fi Ranger  
Sound Bar Entertainment System  
King Jack TV-Radio Antenna  
Pre-Wired for Satellite Dish and Blu-ray Players  
10.1" Touch Screen Radio- AM/FM CD with Bluetooth  
Dual Mirror Technology and Camera Monitor

### GALLEY

2-Burner Induction Cook Top  
30" Stainless Steel OTR Convection Microwave  
Kitchen Pantry Closet  
Stainless Steel 18 cu. ft. Residential Refrigerator  
Kitchen Back Splash  
Fantastic Power Ceiling Vent  
Solid Surface Sink Covers  
Large Stainless Steel Sink  
Pop-up Receptacle with USB Ports

### BATH AND WATER

Whole Coach Water Filter  
Porcelain Toilet with Vacu-Flush System  
Deluxe Fiberglass Shower  
Textured Glass Shower Door  
Power Bath Vent  
Skylight Over Shower  
Winterization Inlet at Termination Compartment  
Water Pump Switch at Termination  
Black Tank Flush System  
Demand Water Pump  
10-Gallon Gas/Electric Water Heater  
Systems Monitor Panel  
Washer/Dryer Ready

### SLEEPING

King 72 x 80  
Bedsread, Pillows with Shams  
Residential Style Headboard  
32" LED TV Bedroom  
USB Ports on Both Sides of Bed  
Front Drop-Down-Bunk  
CPAP Shelf Cabinet

## ELECTRICAL/HEATING/AC

50-Amp Power Cord  
GFCI Circuit  
Outside Receptacle (DS)  
Emergency Start Switch  
Coach and Chassis Battery Disconnect  
Auxiliary Batteries (4)  
Exterior LED Strip Light  
Solar Panel Hook-Up  
(2) 20,000 BTU E.I. Furnace  
15,000 BTU A/C with Heat Pump Front  
15,000 BTU A/C with Heat Pump Rear  
20-Gallon LP Tank  
8.0 KW Diesel Generator  
2000 Watt Pure Sine Wave Inverter  
Automatic Transfer Switch  
Cable TV Jack  
LED Interior Ceiling Lighting  
Auto Generator Start  
Charging Station for Electronic Devices

## AUTOMOTIVE/EXTERIOR

Raised Rail Freightliner Chassis  
360 HP ISB Cummins Rear Diesel Engine, Torque 800 lbs./ft.  
6-Speed Allison 3000 MH Automatic Transmission  
22.5 Radial Tires with Aluminum Rims  
New Diesel Cockpit Dash Console  
Cupholders with LED Lighting at Dash  
Rear Vision Camera with Color Monitor  
Color Side Cameras with Color Monitor  
Fully Automatic Leveling Jacks  
Defroster Fans  
Cruise Control  
Intermittent Wipers  
Dash Air Conditioning  
Frameless Tinted Windows with Safety Glass  
Exterior Mirrors with Heat and Remote  
Auxiliary Driving Lights  
Fuel Fills, Both Sides  
Auxiliary Air Supply Hook-Ups  
22.5 Radial Tires with Chrome Wheel Inserts  
Front and Rear Mud Flaps  
Power Entrance Steps-Double  
Front Deluxe Radius Entrance Door with Dead Bolt Lock  
Front and Rear Fiberglass Caps  
Air Horn  
High Gloss Gelcoat Sidewalls (with Azdel™ Superlight Composite)  
Aluminum Side Swing Compartment Doors  
10,000 Lb. Towing Hitch with 7-Way Plug  
Power Patio Awning  
Slide-Out Awning(s)  
Roof Ladder  
Pass Through Basement Storage  
Full Body Paint  
Fire Extinguisher  
LP Leak Alarm  
Smoke Detector  
Carbon Monoxide Detector  
Outside Entertainment Center with 40" TV  
Lighted Interior and Exterior Assist Handles  
Exterior Propane Hook-Up  
Oval Cockpit Pedestal Table  
Full Width Rear Rock Guard "SPORTSCOACH"  
Power Entry Door Awning  
Exterior Blue Tooth - TV Audio Speakers

## OPTIONAL FEATURES

### INTERIOR COLOR SELECTIONS

Coast  
Cascade  
Sierra

### INTERIOR WOOD COLOR SELECTIONS

Sumatra  
Beachwood  
Slate

### EXTERIOR COLOR SELECTIONS

Full Body Paint  

- Cambridge
- Syrah
- Garnet
- Desert Sand

### OPTIONAL FEATURES

Slide Out Basement Storage Tray  
Power Theater Seating (402TS/403QS)  
Washer/Dryer  
Diamond Shield Protection  
Dual Pane Windows  
In-Motion Satellite  
CSA Up-fit  
CD-MVSA (Canadian Motor Vehicle Safety Act)<sup>1</sup>

#### Notes:

<sup>1</sup> Mandatory For All Canadian Provinces

# SPORTSCOACH RR SPECIFICATIONS

CLASS A DIESEL	402TS	403QS
CUMMINS ISB 6.7L ENGINE	360 HP@2600 RPM	360 HP@2600 RPM
ALLISON TRANSMISSION	3000MH	3000MH
WHEEL BASE	266"	266"
GVWR	32,000 lbs	32,000 lbs
GCWR	42,000 lbs	42,000 lbs
GAWR FRONT	12,000 lbs	12,000 lbs
GAWR REAR	20,000 lbs	20,000 lbs
FUEL CAPACITY	100 gal	100 gal
LP GAS CAPACITY	20 gal	20 gal
FURNACE (BTUs)	(2) 20,000	(2) 20,000
EXTERIOR LENGTH (w/o Ladder)	41' 1"	41' 1"
EXTERIOR HEIGHT (w/A/C)	12' 10"	12' 10"
EXTERIOR WIDTH	102"	102"
FRESH WATER	89 gal	89 gal
GREY WATER	(2) 52 gal	52 gal
BLACK WATER	52 gal	52 gal
WATER HEATER	10 gal	10 gal
AWNING SIZE	18'	17'
EXTERIOR STORAGE	254 cu. ft.	254 cu. ft.
TOW HITCH	10,000 lbs	10,000 lbs

**GVWR (Gross Vehicle Weight Rating)** is the maximum permissible weight of the unit when fully loaded. It includes all weights, inclusive of all fluids, occupants, cargo, optional equipment and accessories. For safety and product performance do NOT exceed the GVWR.

**GCWR (Gross Combined Weight Rating)** is the maximum permissible loaded weight of your motor home and any towed trailer or towed vehicle. Actual GCWR of this vehicle may be limited by the sum of the GVWR and the installed hitch receiver maximum capacity rating; see hitch rating label for detail.

**GAWR (Gross Axle Weight Rating)** is the maximum permissible weight, including cargo, fluids, optional equipment and accessories that can be safely supported by each axle.

**UVW (Unloaded Vehicle Weight)\*** is the typical weight of the unit as manufactured at the factory. It includes all weight at the unit's axle(s), including full fuel, all fluids and LP Gas. The UVW does not include cargo, fresh potable water, additional optional equipment or dealer installed accessories.

\*Estimated Average based on standard build optional equipment.

**CCC (Cargo Carrying Capacity)\*\*** is the amount of weight available for fresh potable water, cargo, passengers, additional optional equipment and accessories. CCC is equal to GVWR minus UVW. Available CCC should accommodate fresh potable water (8.3 lbs per gallon). Before filling the fresh water tank, empty the black and gray tanks to provide for more cargo capacity.

\*\* Estimated average based on standard build optional equipment

Each Coachmen motorhome is weighed at the manufacturing facility prior to shipping. A label identifying the unloaded vehicle weight of the actual unit and the cargo carrying capacity is applied to every Coachmen motorhome prior to leaving our facilities.

The load capacity of your unit is designated by weight, not by volume, so you cannot necessarily use all available space when loading your unit.

Actual towing capacity is dependent upon your particular loading and towing circumstances, which includes the GVWR, GAWR and GCWR as well as adequate trailer brakes. Please refer to the Operator's Manual of your vehicle for further towing information.

All information contained in this brochure is believed to be accurate at the time of publication. However, during the model year, it may be necessary to make revisions and Coachmen reserves the right to make all such changes without notice, including prices, colors, materials, equipment and specifications as well as the addition of new models and the discontinuance of models shown in this brochure. Therefore, please consult with your Coachmen dealer and confirm the existence of any materials, design or specifications that are material to your purchase decision. 11/19

©Copyright 2019 Sportscoach RV a Division of Forest River Inc. - All Rights Reserved.



**FREE MEMBERSHIP**  
www.coachmenowners.com

## CUSTOMER SATISFACTION



www.ForestRiverBuyLocal.com

**24/7 EMERGENCY  
ROADSIDE ASSISTANCE  
WITH VEHICLE PURCHASE\***

---

TOWING JUMP-STARTS TIRE CHANGES FLUID DELIVERY LOCKOUT SERVICE	WINCH-OUT MOBILE MECHANIC TECHNICAL SUPPORT DEALER LOCATOR SERVICES
--	--

\*VALID FOR 1 YEAR FROM DATE OF PURCHASE



**Learn More**  
Scan this barcode using a QR Reader on your smart phone to learn more about Forest River.



A Berkshire Hathaway company.



Sportscoach RV, a Division of Forest River, Inc.,  
A Berkshire Hathaway Company

423 N. Main St., P.O. Box 30, Middlebury, IN 46540

To learn more about Sportscoach RV and our products and see how Sportscoach is making the easy life easier, visit [www.sportscoachrv.com](http://www.sportscoachrv.com)